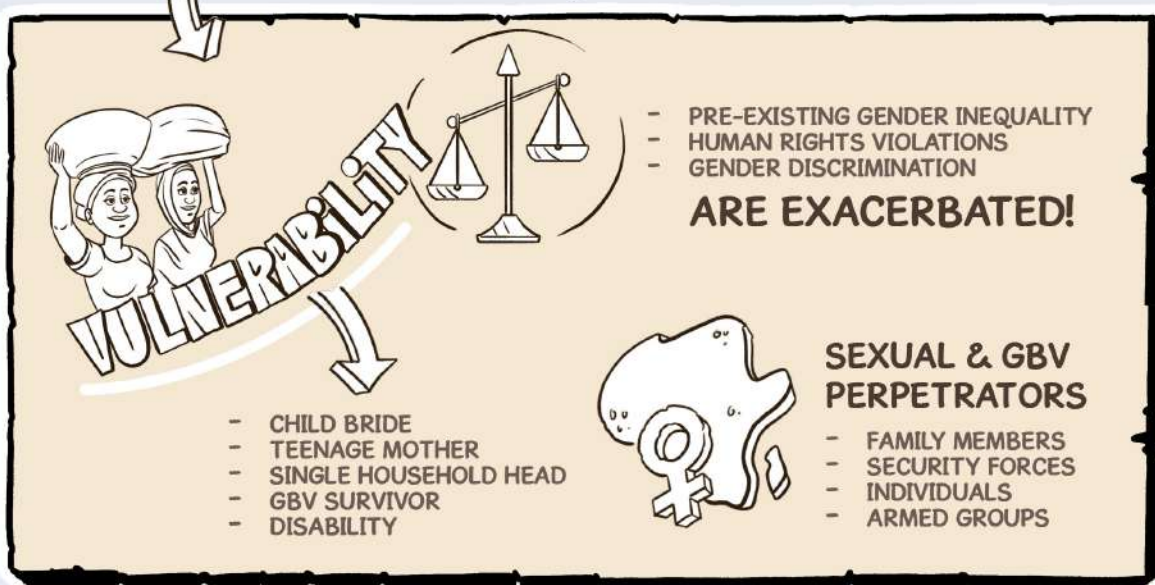
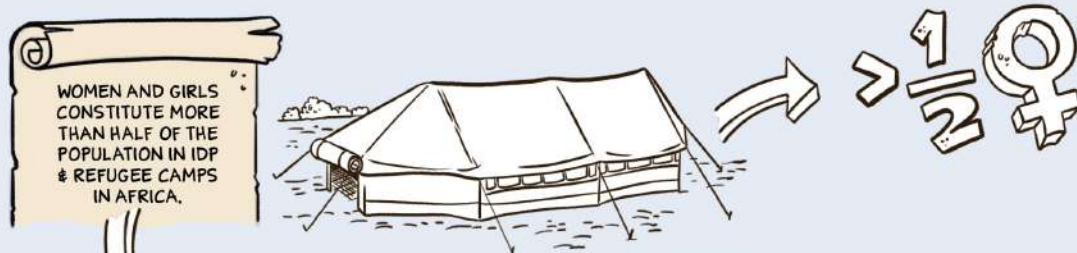


STATUS OF WOMEN'S RIGHTS IN REFUGEE AND INTERNAL DISPLACEMENT SETTINGS IN AFRICA: THE CONTEXT OF AGA AND APSA

This infographic aims to give an overview of the main key findings and recommendations put forward in the study on the Status of Women's Rights in Refugee and Internal Displacement Settings in Africa in the context of the African Governance Architecture (AGA) and the African Peace and Security Architecture (APSA).



KEY FINDINGS OF THE STUDY



GENDER EQUALITY AND WOMEN'S EMPOWERMENT AND RIGHTS

AN INTEGRAL PART OF CONFLICT PREVENTION AND EARLY WARNING



FRAMEWORK OF COORDINATION

AGA AND APSA ARE USEFUL COORDINATION AND ADVOCACY PLATFORMS TO ADVANCE WOMEN'S RIGHTS IN IDP SETTINGS



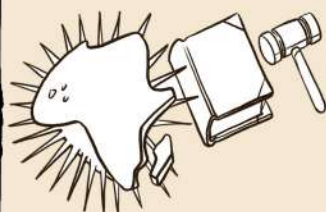
DISCONTINUATION AND DISRUPTION

- EDUCATION
- HEALTH SERVICES, INCLUDING SEXUAL AND REPRODUCTIVE HEALTH SERVICES



PEACE PROCESSES AND TALKS

WOMEN AND GIRLS ARE RARELY ENGAGED MEANINGFULLY OR CONSISTENTLY



SOME AU MEMBER STATES HAVE NOT RATIFIED CONVENTIONS

PERTAINING TO THE PROTECTION OR PROMOTION OF THE RIGHTS OF FEMALE REFUGEES, IDPS AND RETURNEES



RESTRUCTURING OF THE AUC

POSITIVELY IMPACTS THE SYNERGY BETWEEN AGA AND APSA



POLICY RECOMMENDATIONS MEMBER STATES SHOULD:



EQUAL AND MEANINGFUL PARTICIPATION

ENSURE EFFECTIVE REPRESENTATION AND LEADERSHIP OF WOMEN AND GIRLS, IN DECISION-MAKING, PREVENTION, MANAGEMENT, RESOLUTION, AND POST-CONFLICT RECONSTRUCTION AND PEACEBUILDING EFFORTS.



RATIFY , DOMESTICATE, IMPLEMENT AND TIMELY REPORT

ON INTERNATIONAL AND REGIONAL LEGAL AND POLICY FRAMEWORKS ON THE HUMAN RIGHTS OF WOMEN AND GIRLS



MULTI-SECTORAL PARTNERSHIP

ENGAGE CIVIL SOCIETY, WOMEN'S RIGHTS AND CHILD RIGHTS ORGANIZATIONS



AMEND AND REPEAL DISCRIMINATORY LAWS

CRIMINALIZE HARMFUL PRACTICES THAT EXCLUDE AND DISCRIMINATE AGAINST WOMEN AND GIRLS

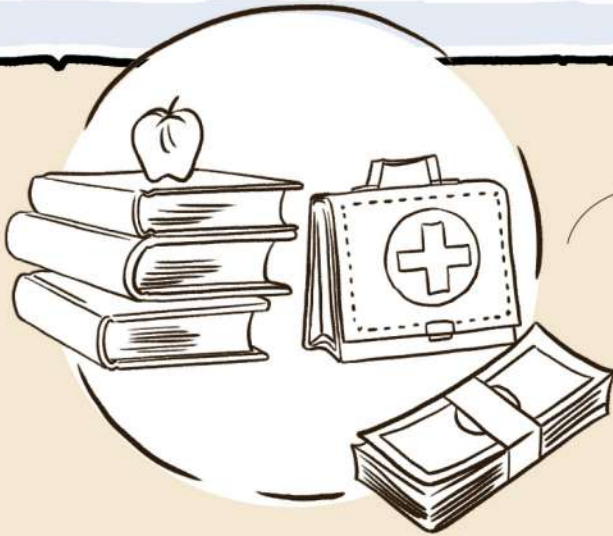


INTERSECTING FORMS OF DISCRIMINATION

VULNERABLE POPULATIONS WITHIN THE BROAD UMBRELLA OF WOMEN AND GIRLS



POLICY RECOMMENDATIONS MEMBER STATES SHOULD:



ACCESS TO QUALITY EDUCATION AND HEALTH

INCREASING BUDGETARY ALLOCATION TO MEET
THE NEEDS OF DISPLACED WOMEN AND GIRLS



FACILITATE ACCESS TO JUSTICE

REMOVING
BARRIERS FACED BY
VULNERABLE WOMEN
AND GIRLS



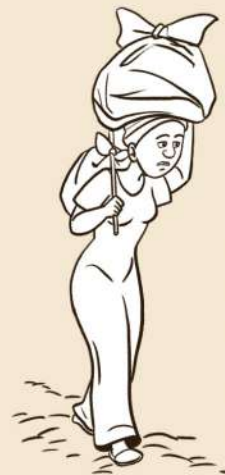
INCREASE RESOURCE ALLOCATION

PREVENTION, MITIGATION
AND MANAGEMENT
OF CASES OF SGBV IN
NATIONAL BUDGETS



TIMELY & QUALITY DISAGGREGATED DATA

BY AGE, SEX AND
DISABILITY FOR BETTER
ANALYSIS AND TARGETED
PROGRAMMING



ADDRESS THE ROOT CAUSES

GOVERNANCE DEFICITS,
CORRUPTION, GENDER
AND SOCIOECONOMIC
INEQUALITIES
AND UNEQUAL
DISTRIBUTION OF
RESOURCES

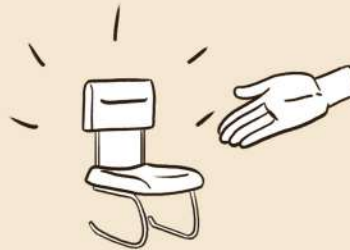


AU ORGANS AND RECs SHOULD:



CONSISTENTLY EMPLOY GUIDELINES

FOR INTEGRATION OF THE NEEDS OF WOMEN AND GIRLS IN INTERNAL DISPLACEMENT AND REFUGEE SITUATIONS IN THE CONTEXT OF AGA AND APSA



ENGAGE WOMEN REFUGEES & IDPS & RETURNEES

IN PEACE PROCESSES AND ENSURE THEIR PARTICIPATION IN FEMWISE-AFRICA AND OTHER PLATFORMS

ADVOCATE FOR IMPLEMENTATION, MONITORING & REVIEW

RATIFICATION, DOMESTICATION AND IMPLEMENTATION BY STATES PARTIES OF RELEVANT LEGAL AND POLICY FRAMEWORKS



TAKE INTO ACCOUNT REALITIES OF DISPLACED WOMEN & GIRLS

COORDINATING, EVALUATING AND REPORTING ON IMPLEMENTATION AND COMPLIANCE WITH AU NORMS

ADVOCATE FOR THE ADOPTION OF POLICY LAWS AND GUIDELINES TO ADDRESS VULNERABILITIES

THAT REFUGEE GIRLS AND WOMEN FIND THEMSELVES IN



CONSIDER AS A STANDING AGENDA ITEM

DURING ANNUAL AU PSC AND UN PSC JOINT CONSULTATIVE MEETINGS

DEVELOPMENT PARTNERS AND HUMANITARIAN ACTORS SHOULD:



SUPPORT EFFECTIVE IMPLEMENTATION OF PEACE AGREEMENTS

TO SET THE FOUNDATION FOR
PEACEBUILDING AND THE SUPPORT
OF IDPS, RETURNEES AND REFUGEES



PROVIDE FINANCIAL & TECHNICAL SUPPORT

TO WOMEN'S RIGHTS
ORGANIZATIONS TO
PUSH THE AGENDA OF
WOMEN'S HUMAN RIGHTS
AND AMELIORATE THE
SITUATION OF DISPLACED
WOMEN AND GIRLS



ENSURE COHERENCE, COORDINATION & SYNERGY

BETWEEN AGA AND
APSA AND INCREASE
INVESTMENTS IN
CONFLICT PREVENTION
AS A WAY OF
ADDRESSING
DISPLACEMENT



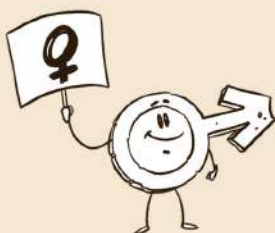
INCREASE INVESTMENTS IN SGBV AND SRH & RR PROGRAMMES

PREVENTION, MITIGATION
AND RESPONSE



INTEGRATE EMERGENCY RESPONSE INTO LONG TERM SUPPORT

TO ADDRESS THE
EXTREME
VULNERABILITIES
THAT IDPS FACE AND
THAT SHORT-TERM
HUMANITARIAN
RESPONSES ALONE
CANNOT ADDRESS



ENGAGE MEN AND BOYS

IN DRIVING CHANGE
IN ATTITUDES AND
NORMS AMONG PEERS



PROVISIONS FOR COMPREHENSIVE REPRODUCTIVE HEALTH