



**United  
Nations**



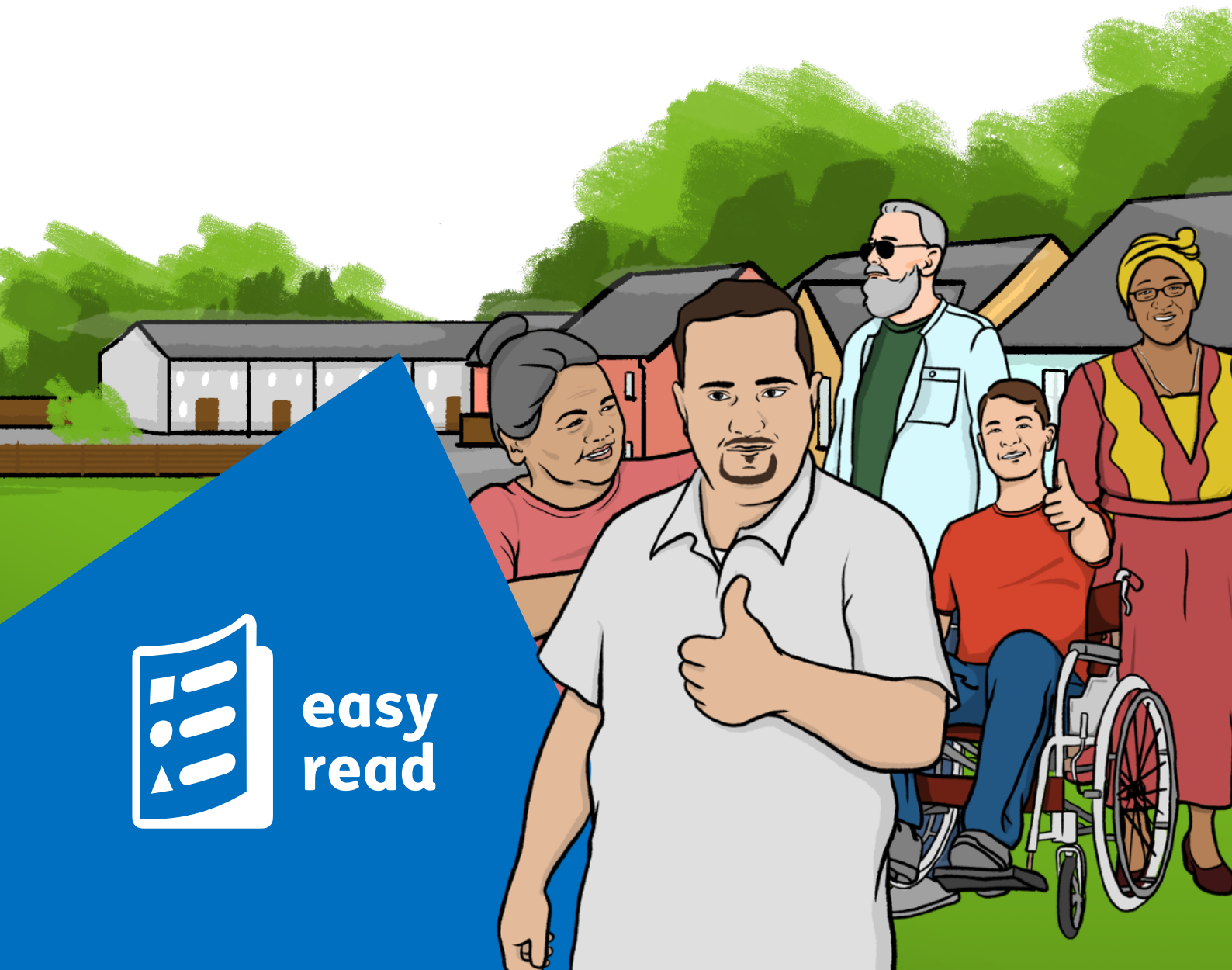
**UNITED NATIONS  
HUMAN RIGHTS**  
OFFICE OF THE HIGH COMMISSIONER

# Moving people out of institutions

United Nations guidelines

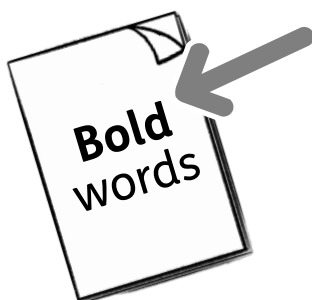


**easy  
read**

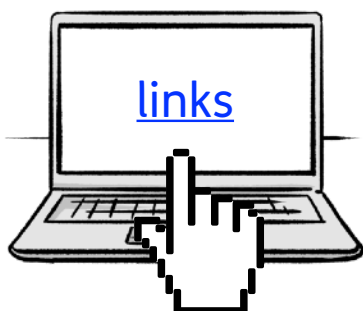


# Contents

	Page
Introduction	3
Institutions	5
The guidelines	7
Following the guidelines	10
Unfair treatment of certain groups	16
For more information	19



In this Easy Read document, difficult words are in **bold**. We explain what these words mean in the sentence after they have been used.



Some words are blue and underlined. These are links which will go to another website which has more information.

# Introduction



The Committee on the Rights of Persons with Disabilities is part of the **United Nations**. We work to make sure that governments are following the **Convention on the Rights of Persons with Disabilities**.



The **United Nations** is an organisation made up of many countries working together. They work to make the world a safer and better place.



The **Convention on the Rights of Persons with Disabilities** is an agreement which tells governments what they need to do to make sure persons with disabilities have the same **rights** as everyone else.



**Rights** are things that every person should have by law. Like the right to be safe, the right to education, the right to be respected.

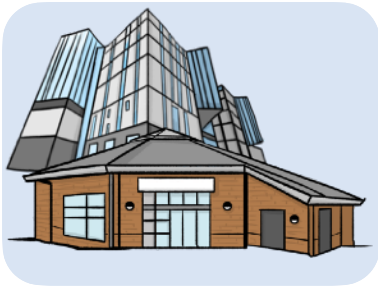


Persons with disabilities should have the right to live independently and be included in their communities.

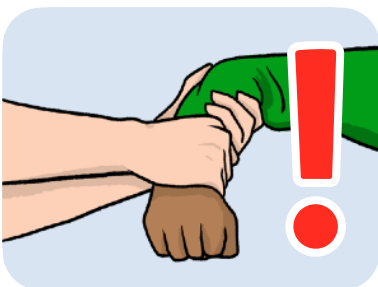


But instead, many persons with disabilities around the world are kept in **institutions**.

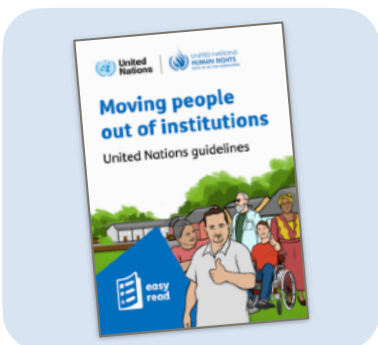
An **institution** is a place where persons with disabilities live together and are kept apart from their community.



There are different types of institutions, like hospitals and group homes.



Persons with disabilities are often treated very badly in institutions.

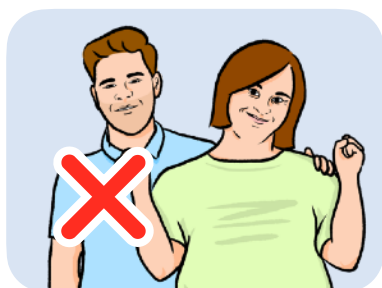


This Easy Read document will tell you about institutions and our guidelines about what governments should do to move people out of them.

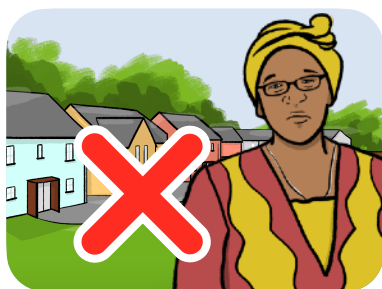
# Institutions



When you live in an institution you do not have the same rights as everyone else, because:



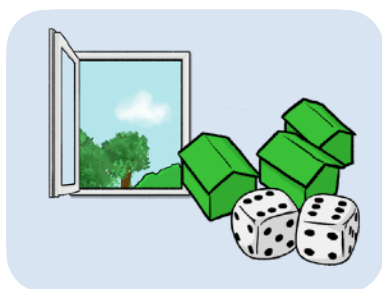
- You can't choose the support or assistants you want.



- You are not included in your local community.



- You are not allowed to make your own decisions.



- You have to do the activities the institution wants you to do.



- You are not allowed to choose where you live and who you live with.

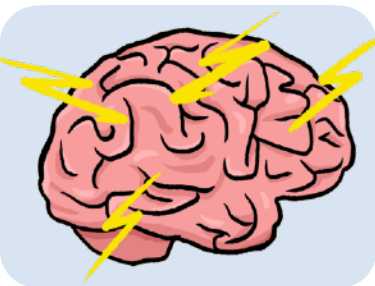


- You often have to live with lots of other people who have the same disability as you.



- You are often given treatment you haven't agreed to, like:

- Drugs which affect your mind or the way you act.



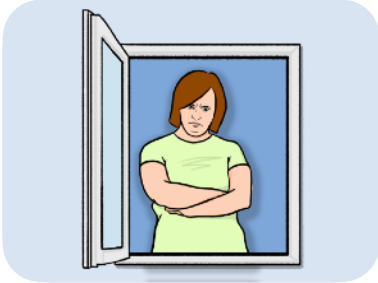
- Electric shocks.



- Being kept on your own for a long time.

# The guidelines

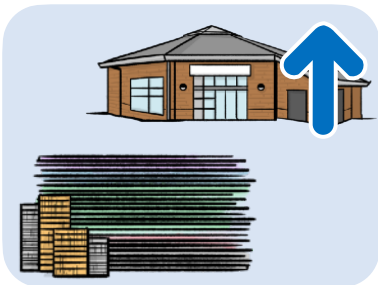
We want governments to stop:



- Putting people into institutions.



- Building new institutions.



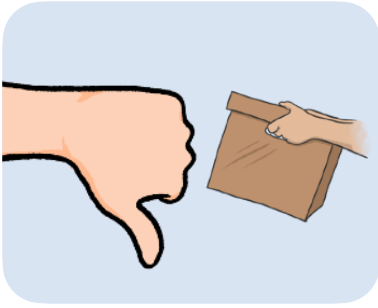
- Spending money to improve institutions or make them bigger.



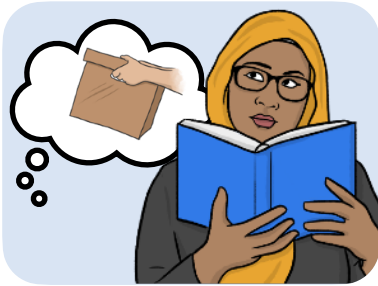
All institutions should be closed down.



The people that live in them should be helped to move out into their local communities.



Many governments have tried to move people from institutions into communities before, but failed.



Our guidelines show governments how to move people from institutions without them losing their rights.

Our guidelines are:



1. Any laws that support institutions or create new institutions should be removed.

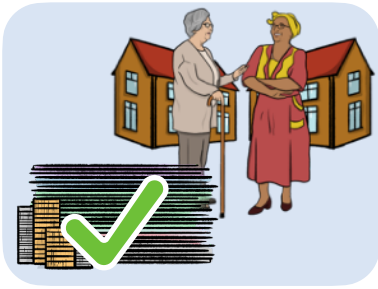


2. Any laws or rules that stop people from making their own decisions should be removed.



3. Governments must stop spending money on these laws and institutions.





4. Instead, governments must spend money on support for persons with disabilities, to help them be part of their local communities.



5. Any plans to help communities must include people who are leaving institutions and moving into the local community.

Governments must:



- Think about following the guidelines straight away.



- Make new laws, rules and plans to help them follow the guidelines.



- Spend money on following the guidelines.

# Following the guidelines

If governments follow the guidelines, this will make sure that persons with disabilities can:



- Move out of institutions.



- Live how they want to.



- Be included in their local community.

By following the guidelines, governments will be able to:



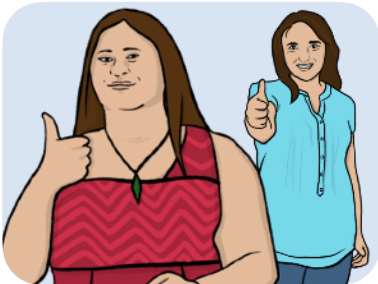
- Let persons with disabilities take control and make decisions about their own lives.



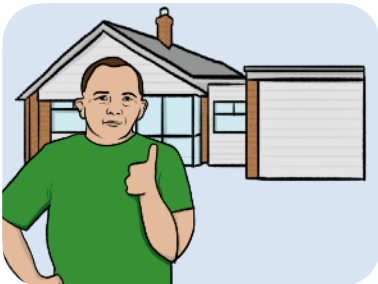
- Provide lots of support services for persons with disabilities in their local communities.



- Support persons with disabilities so they can afford and choose their own care and support.



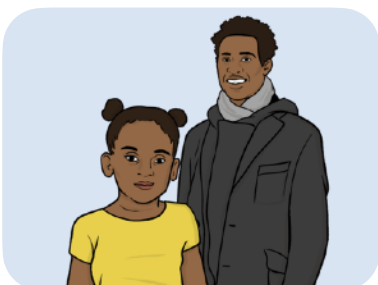
- Support persons with disabilities so that they can afford to live well and in the way they want to.



- Provide affordable housing for persons with disabilities which suits their needs.



- Involve persons with disabilities and their organizations in any decisions that are made about them.



- Let persons with disabilities choose to receive support from their families if they want, and give money to the families to help with this.



- Provide support for older persons with disabilities to stay in their own homes.



- Give each person with disabilities personal support that is right for them.



- Make sure that everyday services are easy to use for persons with disabilities, like:

- Health care.
- Jobs.
- Education.
- Leisure activities.



- Give persons with disabilities help with a plan to leave their institution that respects their decisions.

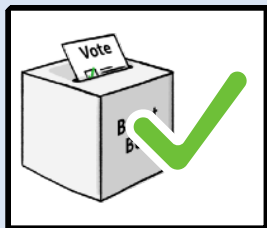
- Make sure persons with disabilities can get all the documents they need to live independently, like:



- Identity cards - these say who you are.



- Residence permits - these say you are allowed to live somewhere.



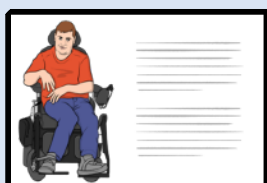
- Voter registration - this says you are allowed to vote.



- Employment numbers - you need these to get a job.



- Social security cards - these help you to get money from your government.



- Disability cards - these explain your support needs.



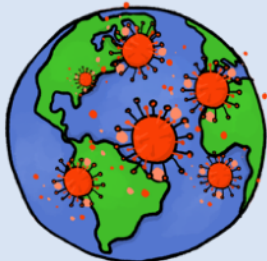
- Passports - these let you travel to other countries.



- Provide persons with disabilities who are leaving institutions with information about services that is easy to understand.



- Carry on closing down institutions, even when emergencies are happening, like:



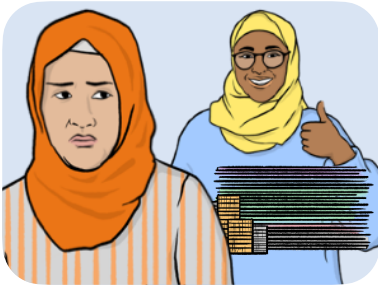
- Pandemics - this is when a disease is spreading around the world



- Natural disasters - these are problems caused by the Earth, like floods, hurricanes and earthquakes.



- Conflicts - this is when there is fighting or war.



- Provide money, support and services for anyone that has been harmed while living in an institution.



- Collect information about how well they are helping persons with disabilities to leave institutions.



- Make sure that the rest of the world can clearly see everything they are doing to help persons with disabilities leave institutions.

# Unfair treatment of certain groups



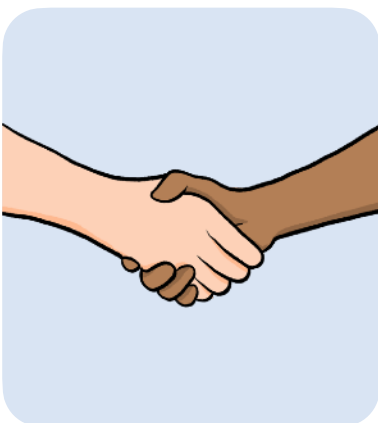
Persons with disabilities are all different, and their disability is only one part of who they are.



Other things may cause persons with disabilities to suffer from more unfair treatment, like their race, sex, age, gender or sexual orientation.



Governments should think about how certain groups of persons with disabilities will be affected while institutions are being closed down and people are leaving them.



Governments should make sure that:

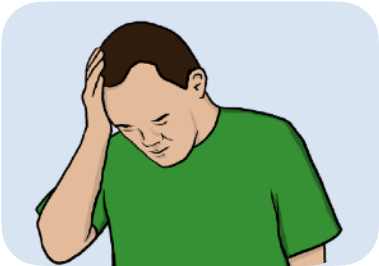
- Each person is treated as an individual and with respect.
- Each person is treated fairly.





# Women and girls with disabilities

Women and girls with disabilities are more likely to:



- Be treated unfairly.



- Suffer violence.



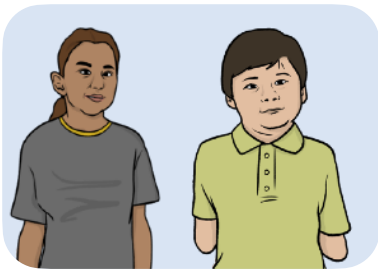
- Be abused - this is when someone hurts you or treats you badly.



- Stopped from making their own decisions.



Governments should think about this while institutions are being closed down and persons with disabilities are leaving them.



## Children with disabilities



All children have the right to grow up in a family.



Governments should make sure that children with disabilities can grow up in a family and not in an institution.



Children who live in institutions need to be moved out so they can grow up in a family like other children.

# For more information



You can look at our website here:  
<https://www.ohchr.org/en/treaty-bodies/crpd>