



**unitar**  
United Nations Institute for Training and Research

# UNOSAT

Production Date: 03/06/2015  
Version 1.0  
Activation Number: CE20150120ERI



## **UNOSAT REPORT IN SUPPORT OF OHCHR COMMISSION OF INQUIRY ON HUMAN RIGHTS IN ERITREA**

**Satellite Imagery Based Activity Analysis**



Sawa Military Camp, 6th Brigade Prison, Eritrea 3 April 2015 DigitalGlobe Imagery

Center Coordinates: 36°59'28.16"E 15°41'8.24"N

This report was produced by UNITAR-UNOSAT in response to questions from OHCHR Commission of Inquiry on Human Rights in Eritrea concerning the location and operational status of alleged prisons in the country.

**UNITAR / UNOSAT**

**unosat@unitar.org**

**Palais des Nations,**

**Geneva, Switzerland**

**T: +41 22 767 4020**

**24/7 hotline: +41 76 487 4998**

**www.unitar.org/unosat**

Satellite Data (1) : WorldView-1/2  
Imagery Dates: 3 April 2015, 4  
November 2014, 11 December 2010,  
28 December 2010, and 2 September  
2009.  
Resolution: 50 cm  
Copyright: DigitalGlobe  
Sources: European Space Imaging

Satellite Data (2): Pleiades  
Imagery Dates: 26 May 2015  
Resolution: 50 cm  
Copyright: © CNES (2015),  
Distribution AIRBUS DS  
Source: GeoStore - Airbus Defence  
and Space

Road Data : Google Map Maker /  
OSM / ESRI  
Other Data: USGS, UNCS, NASA,  
NGA  
Analysis : UNITAR / UNOSAT  
Production: UNITAR / UNOSAT  
Analysis conducted with ArcGIS v10.2  
Coordinate System: World Robinson

The depiction and use of boundaries, geographic names and related data shown here are not warranted to be error-free nor do they imply official endorsement or acceptance by the United Nations. UNOSAT is a program of the United Nations Institute for Training and Research (UNITAR), providing satellite imagery and related geographic information, research and analysis to UN humanitarian and development agencies and their implementing partners.

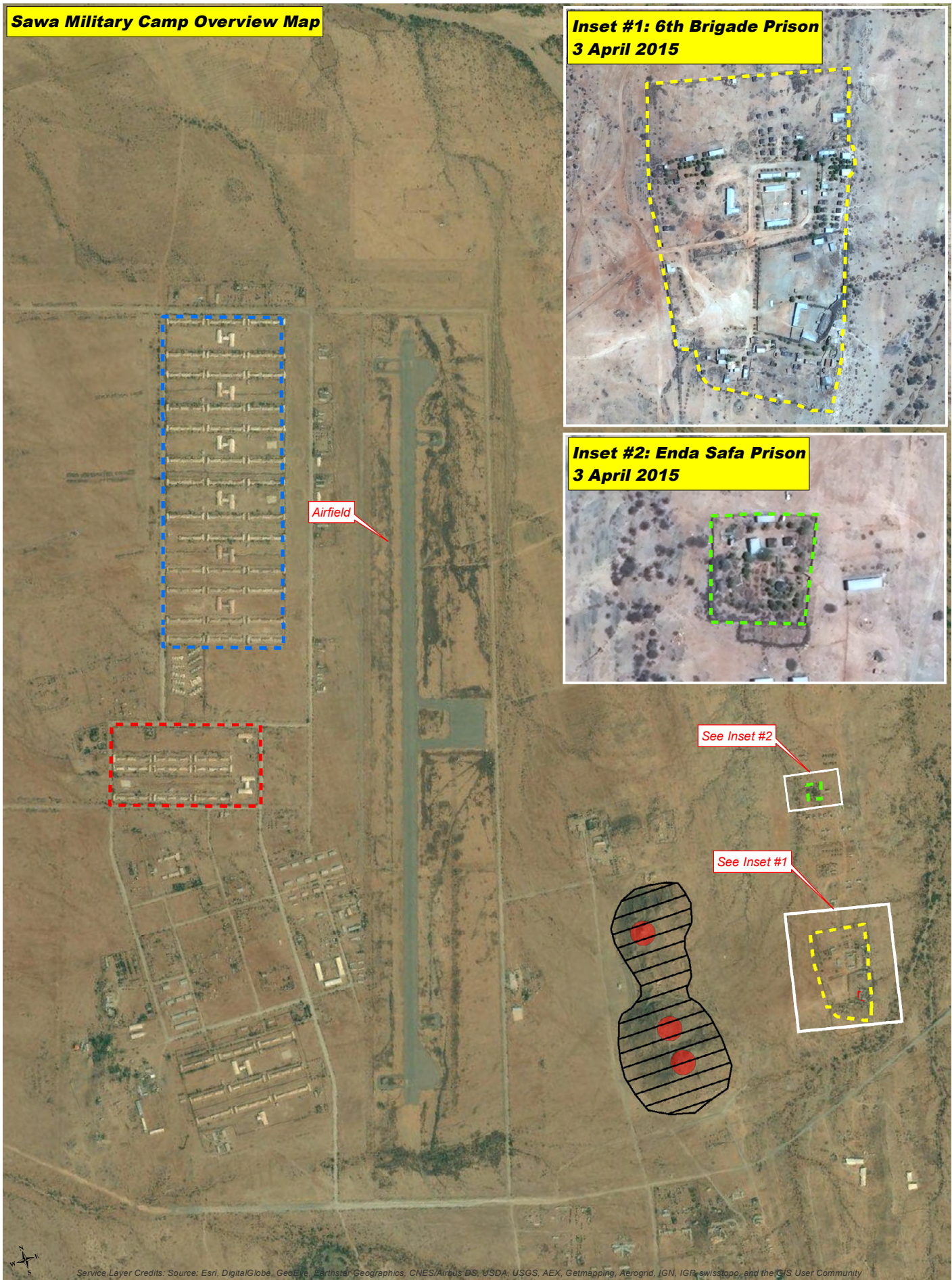
This work by UNITAR/UNOSAT is licensed under a Creative Commons Attribution-NonCommercial-ShareAlike 3.0 Unported License.

**Sawa Military Camp Overview Map**

**Inset #1: 6th Brigade Prison  
3 April 2015**



**Inset #2: Enda Safa Prison  
3 April 2015**

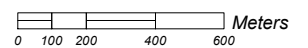


Service Layer Credits: Source: Esri, DigitalGlobe, GeoEye, Earthstar, Geographics, CNES/Airbus DS, USDA, USGS, AEX, Getmapping, Aerogrid, IGN, IGP, swisstopo, and the GIS User Community

**LEGEND**

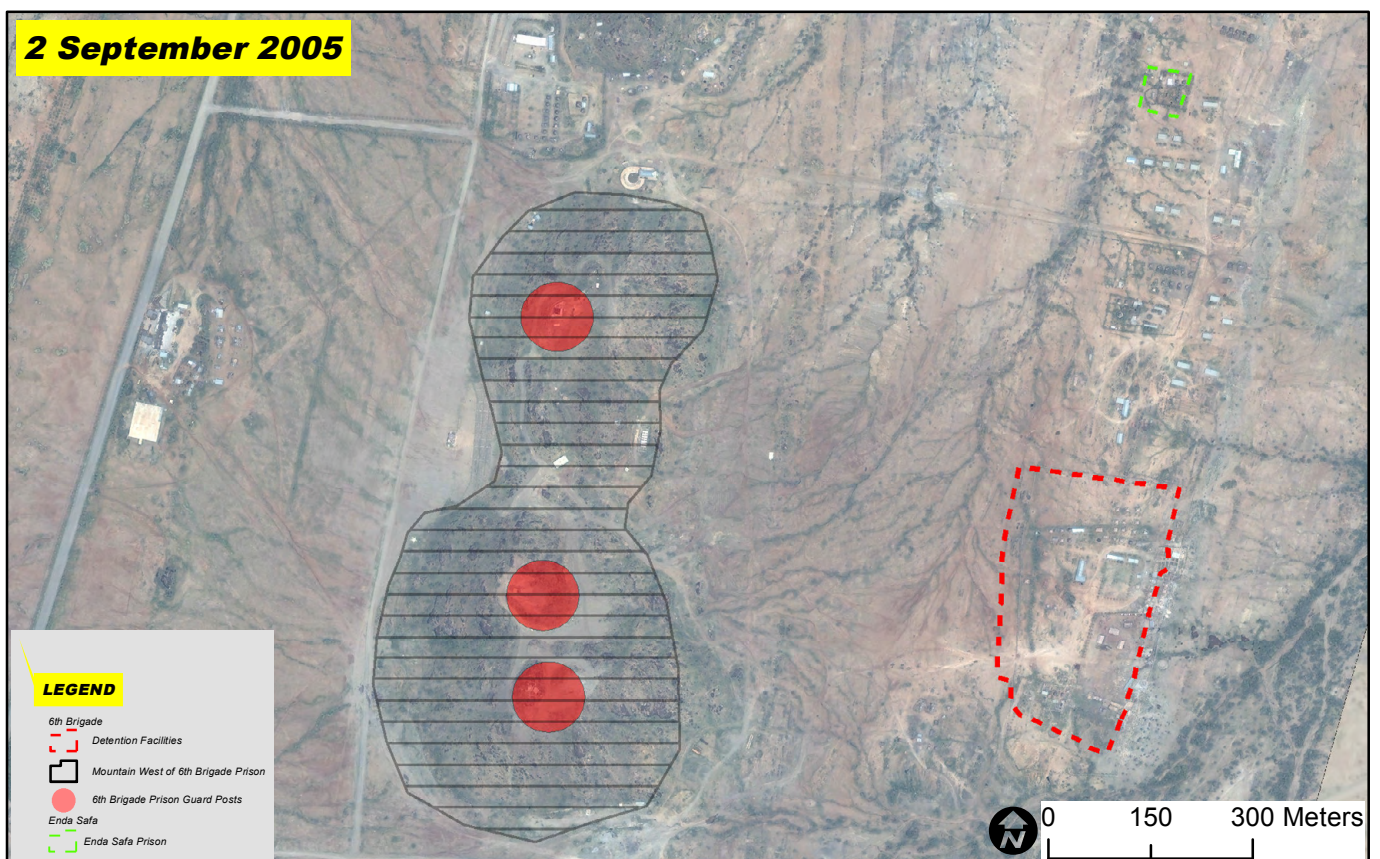
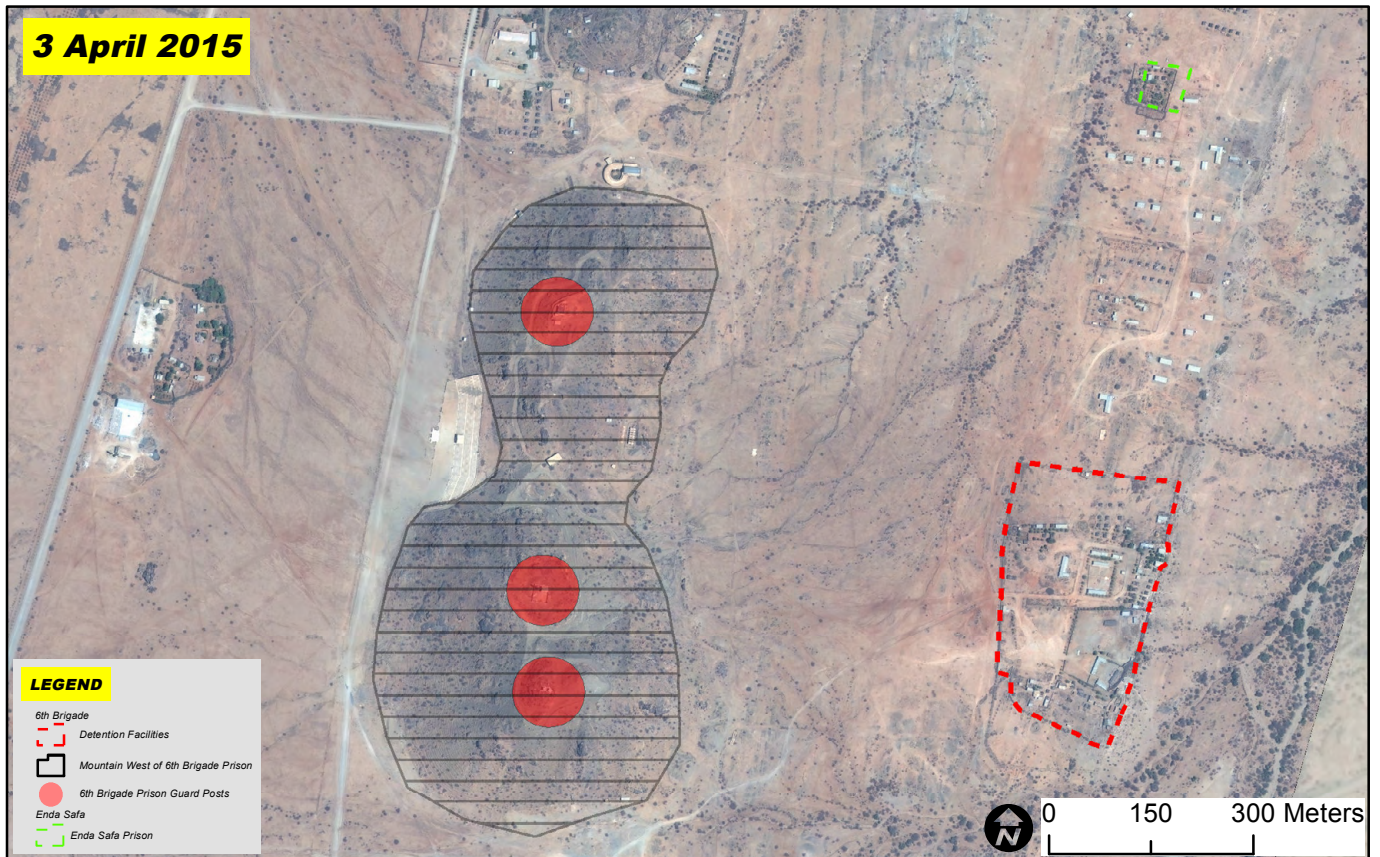
- Camp Accommodation and School
  - Warsai Yikealo Secondary School
  - Accommodation of Conscripts
- Detention Facilities
  - 6th Brigade Prison
  - Enda Safa Prison
- Mountain West 6th Brigade Prison
- 6th Brigade Prison Guard Posts

Map Scale for A4: 1:22,000



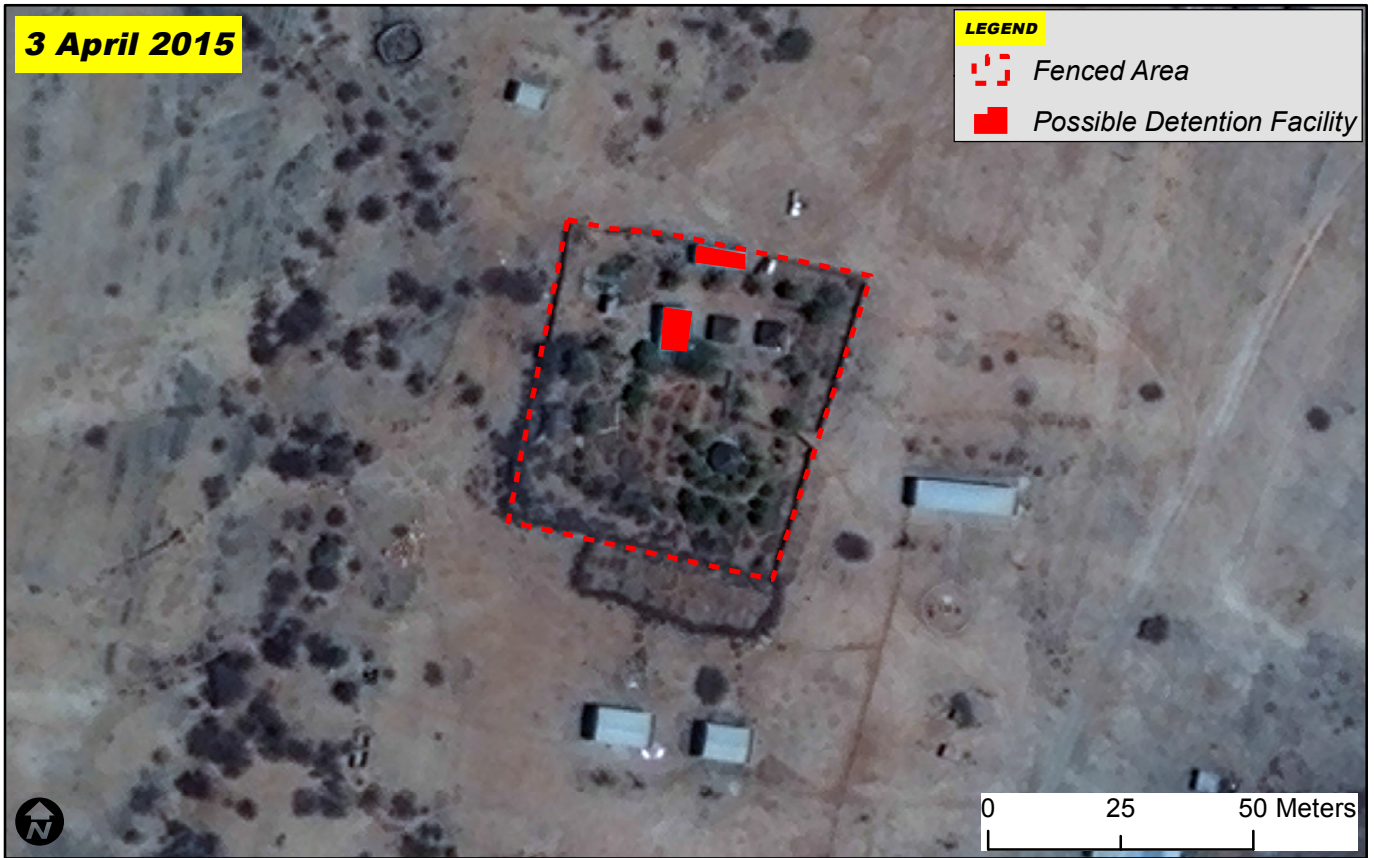
The depiction and use of boundaries, geographic names and related data shown here are not warranted to be error-free nor do they imply official endorsement or acceptance by the United Nations. UNOSAT is a program of the United Nations Institute for Training and Research (UNITAR), providing satellite imagery and related geographic information, research and analysis to UN humanitarian and development agencies and their implementing partners.

# 6th Brigade and Enda Safa Prisons at Sawa



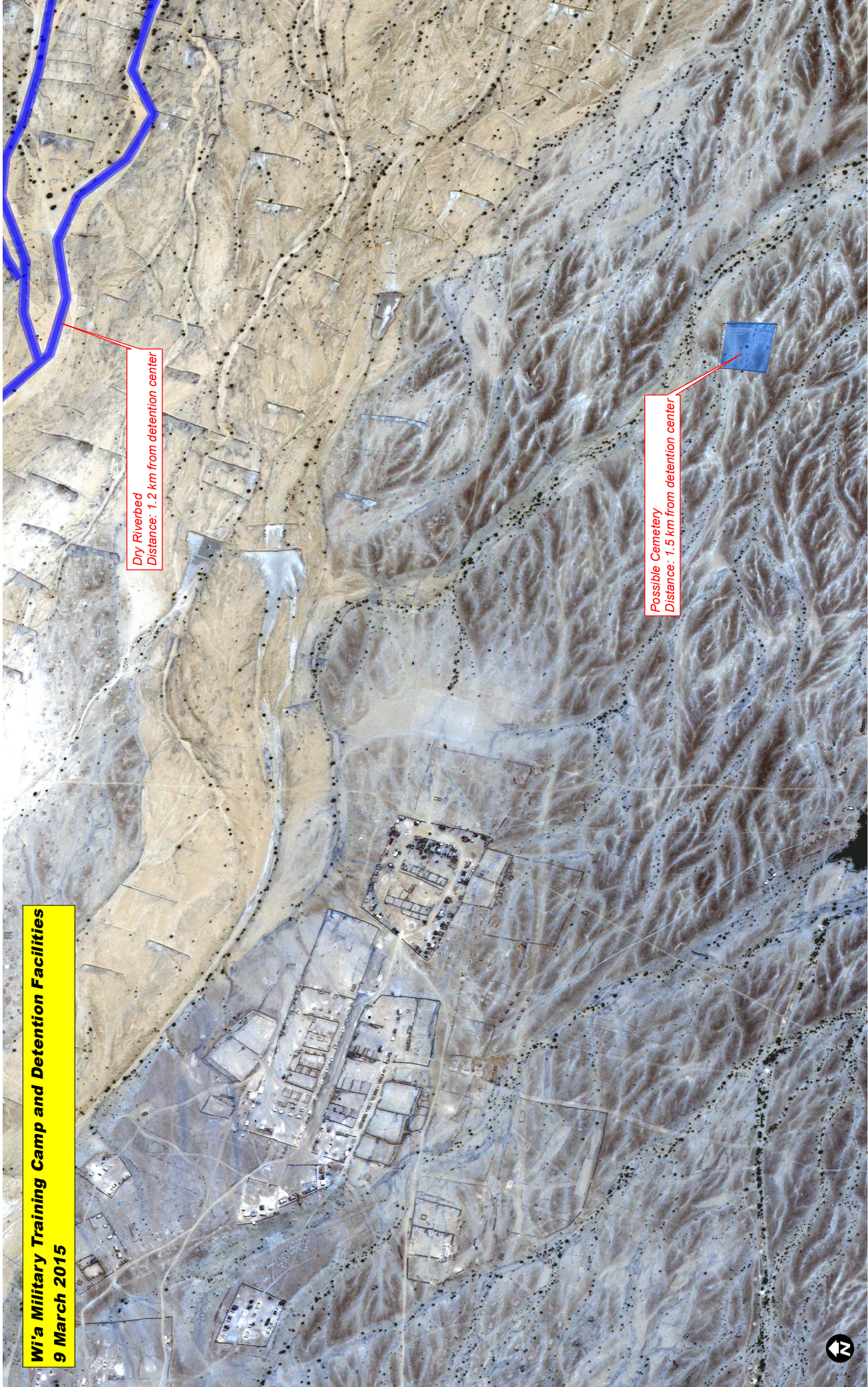
According to multiple eyewitness accounts, the 6th Brigade Prison, is located east of the military camp (map page 1). Former inmates depict the location of the detention facility East of the hill where guard posts are used to control movement in and out of the installation. UNOSAT satellite imagery based analysis identified the location and main features of this facilities inside the fenced perimeter that are being used to detain prisoners. Furthermore, UNOSAT assesses that the 6th Brigade Prison seems to be operational. Imagery between 2005 and 2015 shows construction activity not only inside the prison facility, but across the military camp.

# Enda Safa Detention Facility at Sawa



Enda Safa detention facility is located East of Sawa military camp and approximately 550 meters north of the 6th Brigade detention facility. UNOSAT satellite imagery based analysis identified the location and main features of this facility inside the fenced perimeter. The presence of a vehicle outside the fenced perimeter in the imagery collected on 3 April 2015 indicates that the compound is still in use. Since 2005, the perimeter of the compound has increased, and the fence has been reinforced.

**Wi'a Military Training Camp and Detention Facilities**  
**9 March 2015**





Dry Riverbed  
Distance: 1.2 km from detention center

Possible Cemetery  
Distance: 1.5 km from detention center

Map Scale for A4: 1:9,000



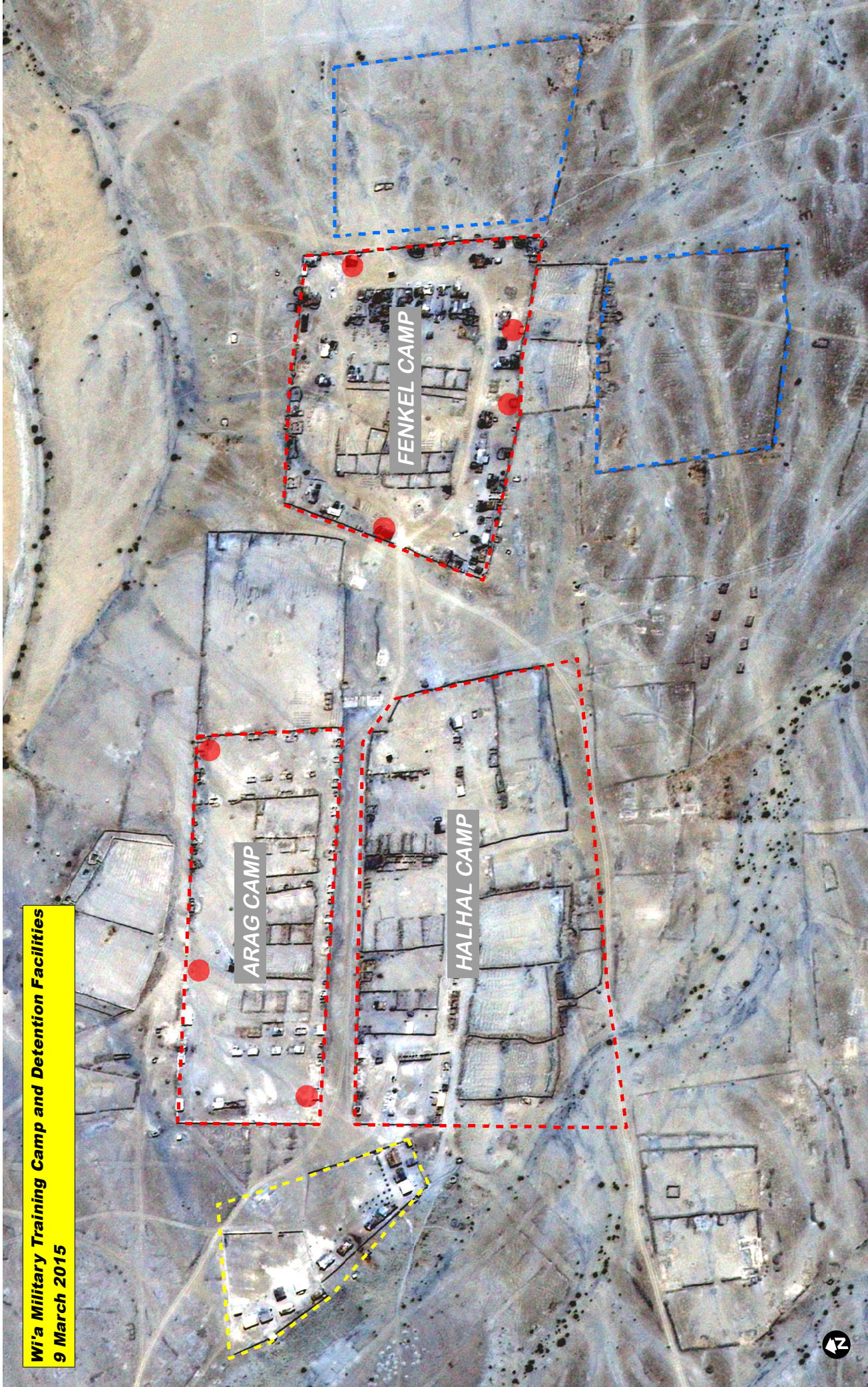
**LEGEND**

-  Possible Cemetery
-  Dry Riverbed

The depiction and use of boundaries, geographic names and related data shown here are not warranted to be error-free nor do they imply official endorsement or acceptance by the United Nations. UNOSAT is a program of the United Nations

Institute for Training and Research (UNITAR), providing satellite imagery and related geographic information, research and analysis to UN humanitarian and development agencies and their implementing partners.

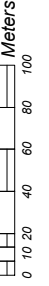
**Wi'a Military Training Camp and Detention Facilities**  
**9 March 2015**



**LEGEND**

- Guard Posts
- Camps
- Offices and Detention Facilities
- Military Training Area

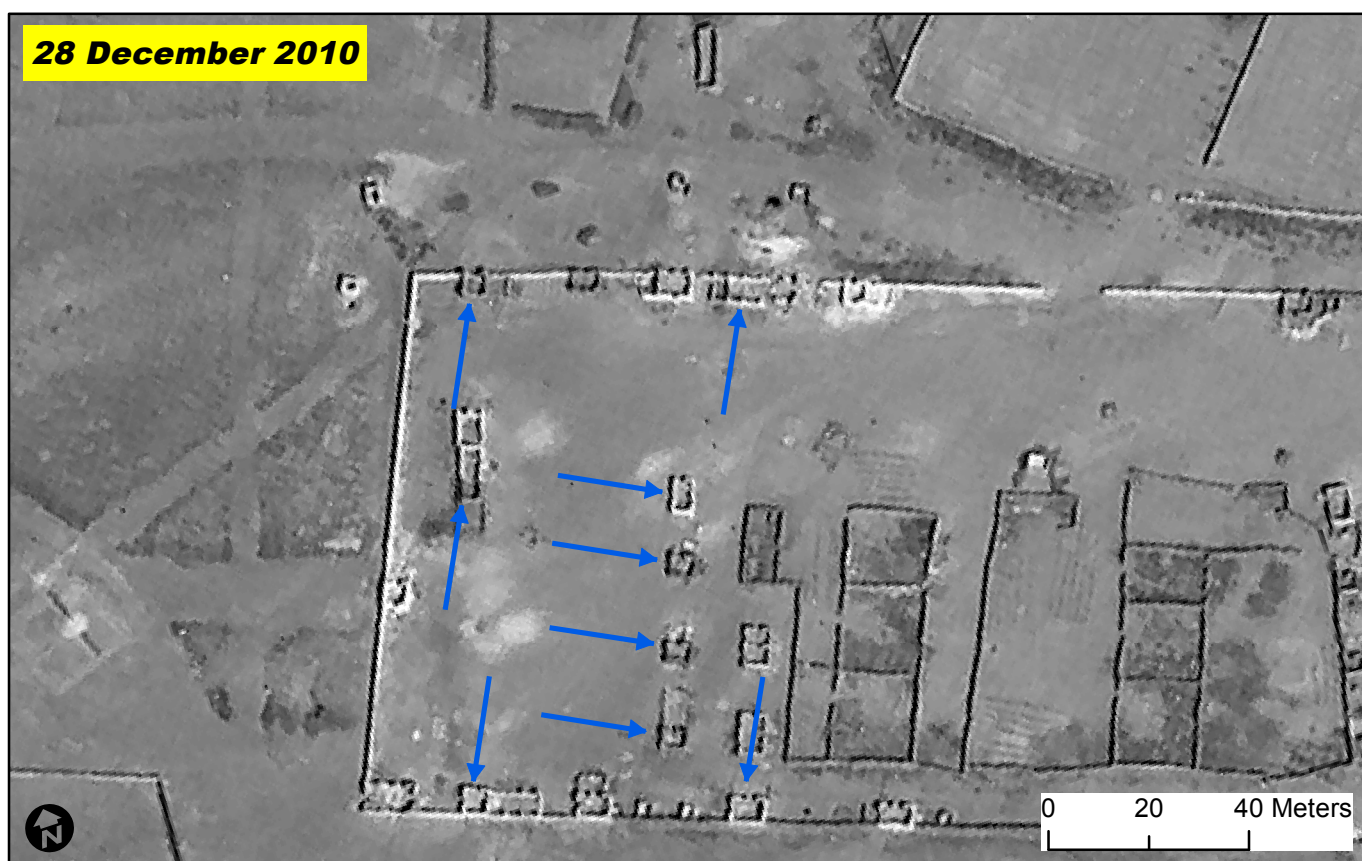
Map Scale for A4: 1:3,600



The depiction and use of boundaries, geographic names and related data shown here are not warranted to be error-free nor do they imply official endorsement or acceptance by the United Nations. UNOSAT is a program of the United Nations

Institute for Training and Research (UNITAR), providing satellite imagery and related geographic information, research and analysis to UN humanitarian and development agencies and their implementing partners.

# Wi'a Change Detection





According to multiple eyewitness accounts, Wi'a was abandoned in 2009 after a meningitis outbreak. UNOSAT satellite imagery-based change detection analysis identified nine buildings with new roofs in imagery from 2015. Imagery from 9 March 2015 shows nine previously roofless buildings, as seen on imagery from 28 December 2010 (blue arrows), with new roofs. This is a clear indication of activity between 2010 and 2015. Additionally, UNOSAT identified a possible graveyard used to bury the dead and the dry riverbed purportedly used by inmates to wash (see Figure 2).

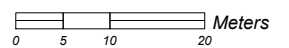
**Mai Serwa Detention Facilities Overview Map**  
**26 May 2015**



**LEGEND**

-  Possible Zinc Hangars
-  Possible Metal Containers

Map Scale for A4: 1:800



*The depiction and use of boundaries, geographic names and related data shown here are not warranted to be error-free nor do they imply official endorsement or acceptance by the United Nations. UNOSAT is a program of the United Nations Institute for Training and Research (UNITAR), providing satellite imagery and related geographic information, research and analysis to UN humanitarian and development agencies and their implementing partners.*



# Mai Serwa Detention Facility



Mai Serwa is a detention facility located approximately 8 km northwest of the city of Asmara. UNOSAT satellite imagery-based analysis identified the location and main features of this facility. According to witnesses, the detention facility has various types of cells. Witnesses reported the existence of metal containers, two underground trucks containers and several zinc hangars of about 25 square meters. Imagery collected on 31 July 2010 shows the presence of a total of 28 structures that are possibly metal containers. Imagery also shows a total of 14 different structures that match the description as zinc hangars. As of 26 May 2015 the number of possible metal containers remains similar, approximately 26, although their distribution has changed. The possible hangars are still visible by 26 May 2015.

---

*This is a preliminary assessment and has not yet been validated in the field. Please send feedback to UNITAR/UNOSAT at the contact information below.*

**UNOSAT Contact:**

E-mail: [unosat@unitar.org](mailto:unosat@unitar.org)

T: +41 22 767 4020 (UNOSAT Operations)

T: +41 22 767 4137 (UNOSAT Management)

F: +41 22 766 9145

24/7 hotline: +41 76 487 4998



# UNOSAT

**Post address**

**UNOSAT / UNITAR**  
Palais des Nations  
CH-1211 Geneva 10  
Switzerland

**Visiting address**

**UNOSAT / UNITAR**  
International Environment House  
Chemin des Anémones 11-13  
CH-1219 Châtelaine, Geneva - Switzerland

*Send us GEO-PICTURES from disasters worldwide. Scan QR code or download free UN-ASIGN APP here:*



<http://download.ansur.no/assign-un.apk>



<https://itunes.apple.com/app/un-assign/id507125097?mt=8>