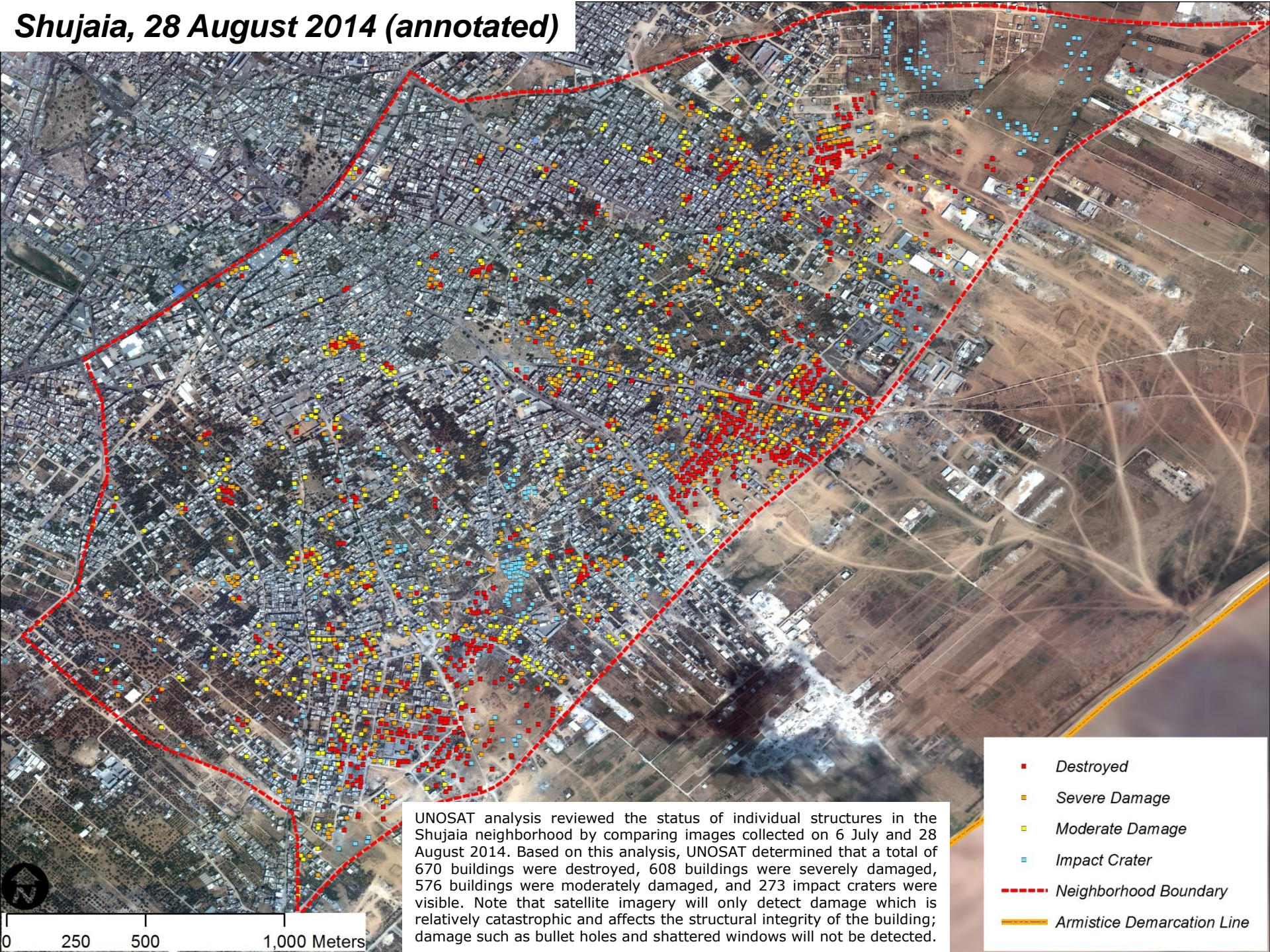


Shujaia, 28 August 2014 (annotated)



UNOSAT analysis reviewed the status of individual structures in the Shujaia neighborhood by comparing images collected on 6 July and 28 August 2014. Based on this analysis, UNOSAT determined that a total of 670 buildings were destroyed, 608 buildings were severely damaged, 576 buildings were moderately damaged, and 273 impact craters were visible. Note that satellite imagery will only detect damage which is relatively catastrophic and affects the structural integrity of the building; damage such as bullet holes and shattered windows will not be detected.

- Destroyed
- Severe Damage
- Moderate Damage
- Impact Crater
- Neighborhood Boundary
- Armistice Demarcation Line