

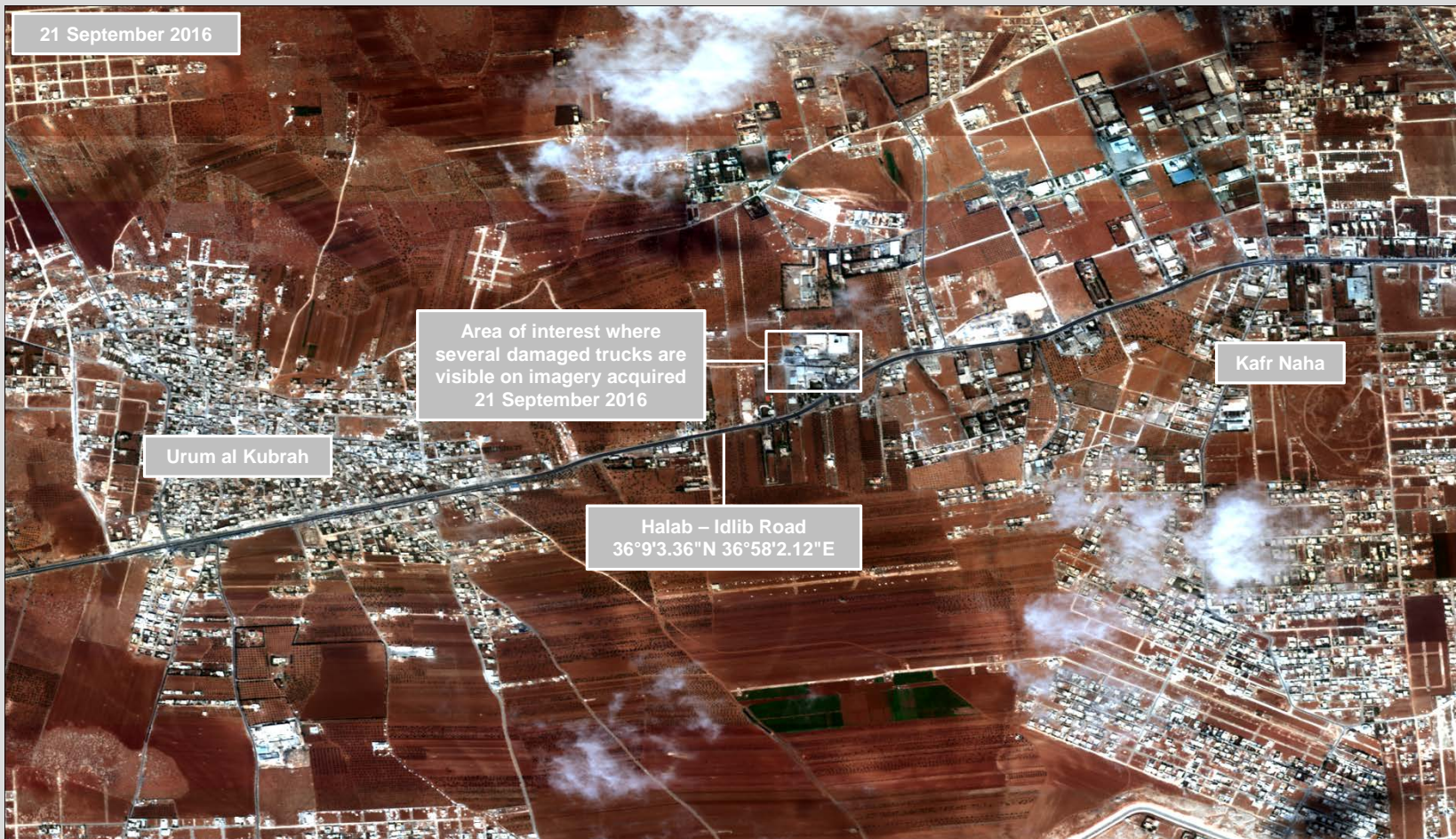


Source: Omar Haj Kadour/AFP/Getty Images

United Nations / SARC Aid Convoy  
Damage Assessment  
Urum al Kubrah  
Aleppo Governorate, Syria

UNITAR-UNOSAT conducted a satellite imagery based damage assessment on the road between Urum an Kubrah and Kafr Naha in Aleppo Governorate in the vicinity of 36°9'3.36"N 36°58'2.12"E in an effort to identify the location where the Syrian Arab Red Crescent / UN aid convoy suffered an alleged attack on the evening of 19 September. Using imagery acquired on 21 September 2016 and comparing it with imagery collected on 18 September 2016 and 5 August 2016, UNOSAT identified one area in the road between the two aforementioned cities where at least 16 transportation trucks and one small SUV are visibly damaged and scorched as of 21 September.

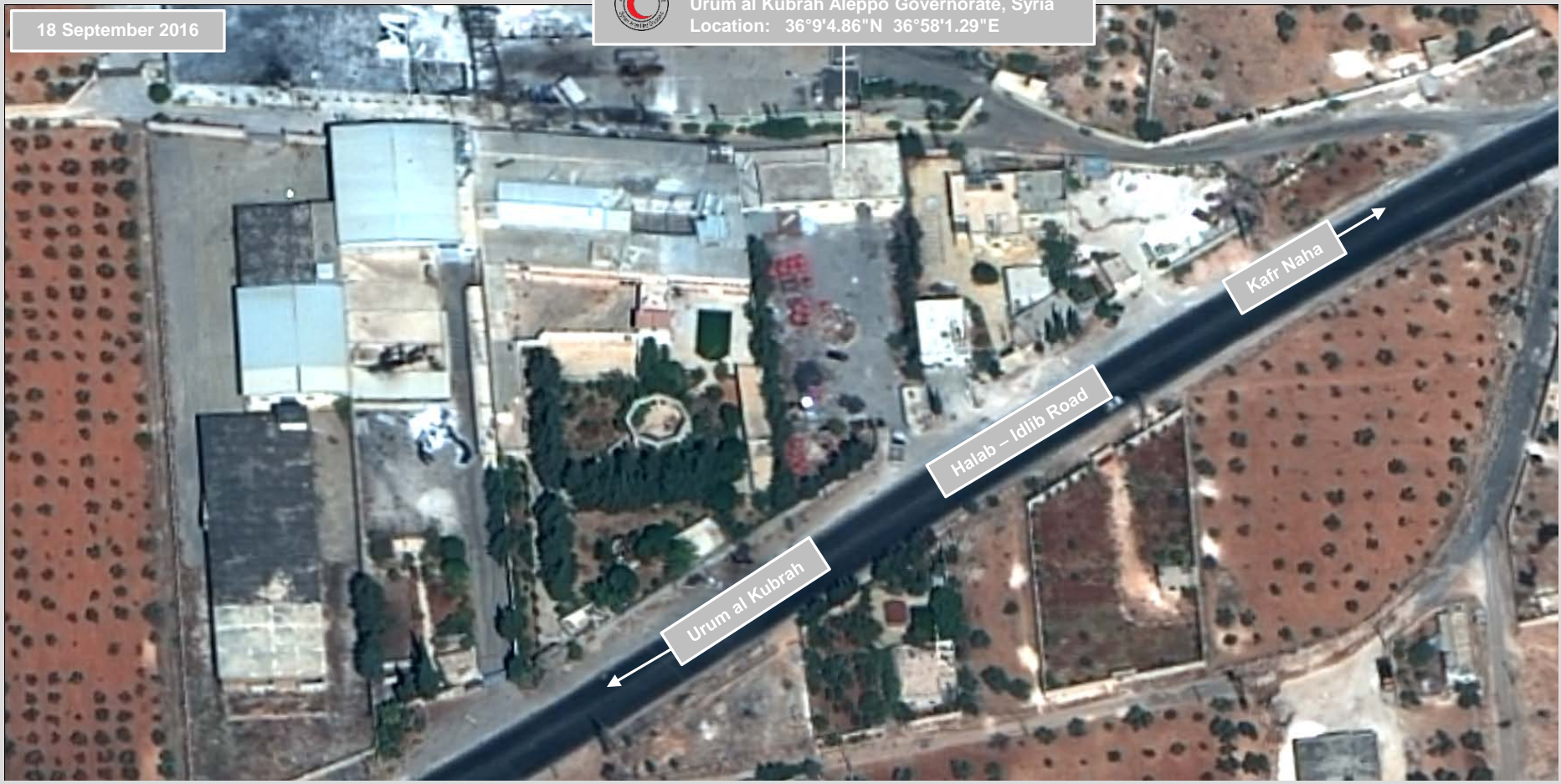
Additional satellite imagery from 13 October shows the area of the attack partially cleaned up with trucks removed.





Syrian Arab Red Crescent Warehouse  
Urum al Kubrah Aleppo Governorate, Syria  
Location: 36°9'4.86"N 36°58'1.29"E

18 September 2016



### Damage Assessment Post-event Satellite Image



### Damage Assessment UN – SARC Warehouse Entrance

21 September 2016



Ground picture showing area outside the SARC warehouse where seven transportation trucks were parked at the moment of the attack. Please note that location of trucks in the ground picture and satellite image match, except for truck number 1 in the satellite image, which cannot be seen due to the view angle of the photo.



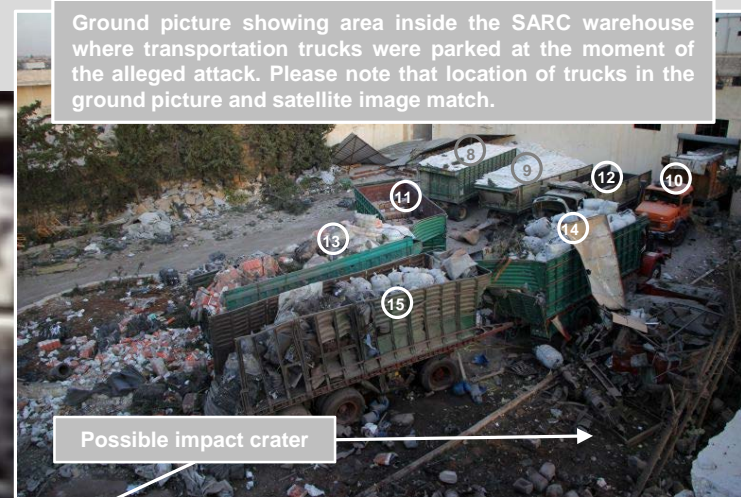
Possible Impact Craters

## Damage Assessment

21 September 2016



Ground picture showing area inside the SARC warehouse where transportation trucks were parked at the moment of the alleged attack. Please note that location of trucks in the ground picture and satellite image match.



The hole in the roof visible in the ground picture is not observable on satellite imagery (possible location highlighted in black box in inset image) but truck number 10 and the top warehouse wall windows location highlighting in both the satellite image collected on 21 September 2016 and the ground picture correspond.



Possible warehouse loading dock



Warehouse windows



## Damage Assessment UN – SARC Warehouse

21 September 2016





## Persistent Satellite Imagery Monitoring



UNITAR Operational Satellite Application Programme (UNOSAT)

Contact information:

[www.unitar.org/unosat](http://www.unitar.org/unosat)

[unosat@unitar.org](mailto:unosat@unitar.org)

T +41 22 767 4020



**unitar**

United Nations Institute for Training and Research

United Nations Institute for Training and Research

Institut des Nations Unies pour la formation et la recherche

Instituto de las Naciones Unidas para Formación Profesional e Investigaciones

Учебный и научно-исследовательский институт

Организации Объединенных Наций

معهد الأمم المتحدة للتدريب والبحث

联合国训练研究所

Palais des Nations, CH-1211

Geneva 10, Switzerland

T +41 22 917 8400

F +41 22 917 8047

[www.unitar.org](http://www.unitar.org)